

### 1.3 LOCATION & SIZE

The pool barge is a companion program element to a reconstructed pier 62/63 but is structurally removed from the pier itself, accessible by a gangway and floating dock.

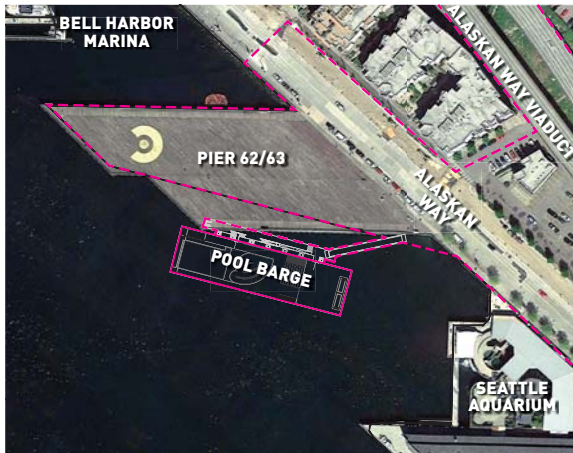
However, as a maritime vessel, it is unique in its possibility to move from this location to other locations around the city.

The barge is sized to accommodate the desired aquatic program (including stringent clearances around pools) while accommodating naval architectural considerations.

A key decision governing size was to allow future access to the freshwater Lake Washington watershed, with the length and width of the vessel designed to fit within the Chittenden (Ballard) Locks. This decision has limited the width to 75 feet to accommodate the 80-foot-wide large lock.

**LEGEND**

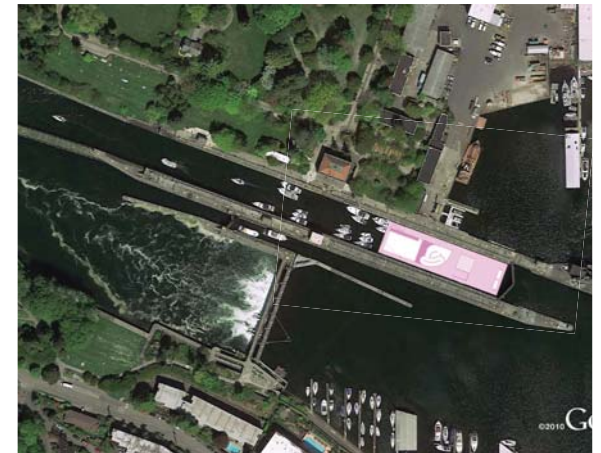
- Pool Barge Project Boundary
- - - Core Project
- 🕒 200 ft.



PROJECT LOCATION



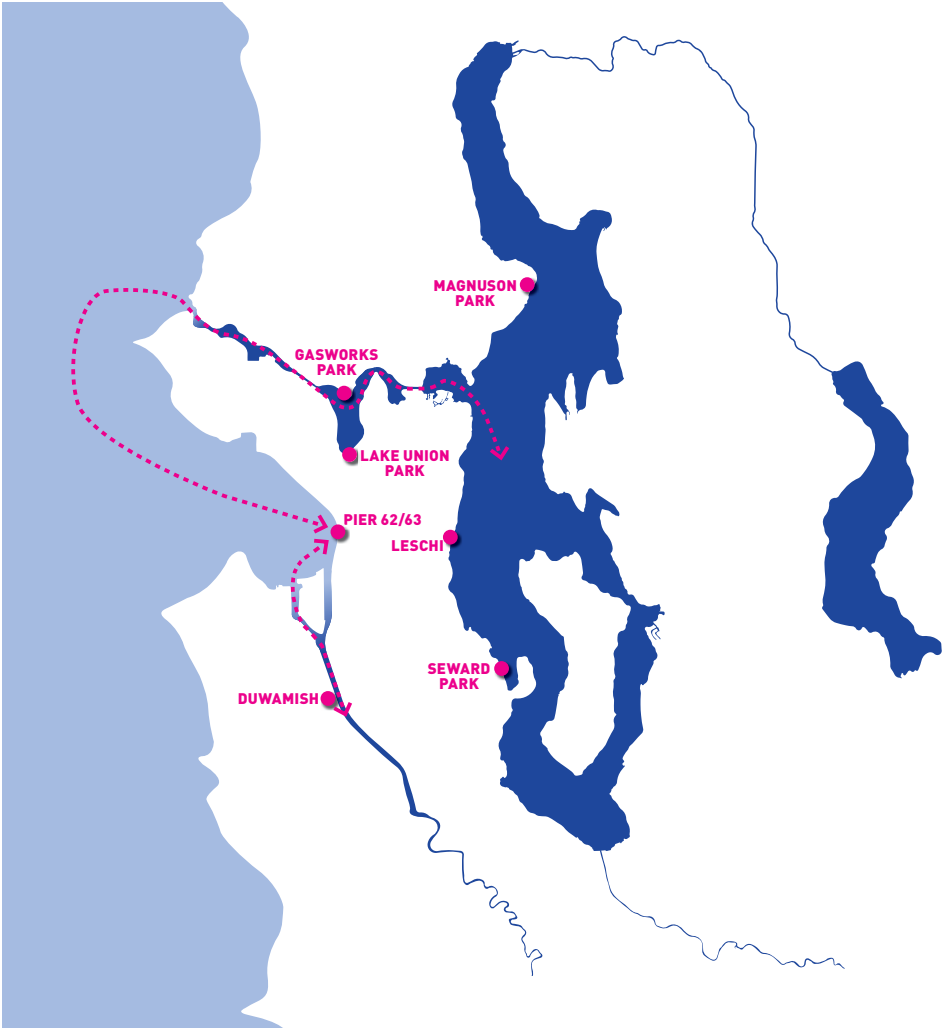
POOL BARGE SIZE



POOL BARGE IN BALLARD LOCKS DIAGRAM

**The mobile nature of the pool barge allows:**

- Construction and operation of the pool barge at an alternate location in the city prior to completion of pier 62/63 reconstruction.
- Off-season (non-summer) relocation of the pool barge to another public access point where it can serve as an event venue for alternate programming.
- Off-season storage and ongoing maintenance of the pool barge in alternate locations from the central waterfront.



**ALTERNATE LOCATIONS**