

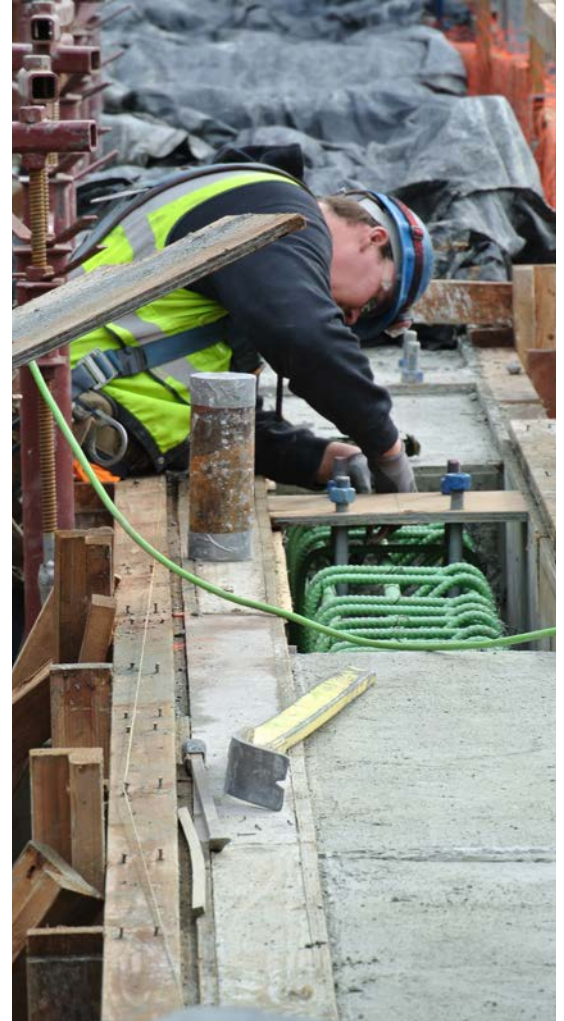


# WATERFRONT PROGRAM PROGRESS REPORT

Q1 2016 (January – March)

## Highlights from Q1 2016

- In partnership with Friends of Waterfront Seattle, the Waterfront Program advanced plans for a potential Pier 62/63 Phase 1 rebuild to align construction with the schedule for Seawall Replacement construction in the same area. The Phase 1 rebuild would provide structural improvements to the southern half of the pier and preserve the northern half in place.
- In February, the Waterfront Program issued a design Request for Qualifications (RFQ) for the Pike and Pine Streetscape Improvements, spanning Pike and Pine streets between First Avenue and Melrose Avenue.
- In March, the Waterfront Program completed the 30% design for the Lenora Street Bridge retrofit.
- The Waterfront Program developed a summer activation plan with the Office of Arts and Culture (ARTS), Friends of Waterfront Seattle, the Downtown Seattle Association's Metropolitan Improvement District, Seattle Department of Transportation (SDOT) and Seattle Parks and Recreation (Parks) to operate and maintain programming in the waterfront area, including vending, plantings, furnishings, and a series of art installations. The plan is scheduled to begin in June 2016.
- In January, the Waterfront Program released the Design-Build RFQ for the Washington Street Boat Landing Pergola Project. The project covers design, restoration and construction relocation of the pergola, to be placed back on the waterfront in the Pioneer Square Historic District. Design and construction is planned for Q4 2016 through Q3 2017.



# Seawall Project progress in Q1

## SEAWALL PROJECT CONSTRUCTION

- Started construction between Pine and Pike streets, including site mobilization, excavation and demolition, and soil freeze installation. Sheet pile installation was completed within the in-water work window. Work between Pike and Pine streets is expected to be complete in mid-2017.
- Continued construction between Madison and University streets, which is expected to be substantially complete by Memorial Day 2016. Key activities included installation of pre-cast elements, utility installation and restoration.
- Continued construction directly adjacent to Colman Dock, with key activities including concrete slab pours, jet grout installation and installation of pre-cast elements. This work is expected to be complete in Q3 2016.
- Continued installation of permanent movement joint plates and cut sheet piles along the central waterfront.
- Continued monitoring of settlement and vibration adjacent to the project work zone, designing temporary structures to minimize construction effects to private property.

## Construction Experience/Public Space Activation

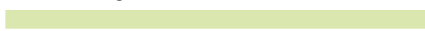
- Implemented wayfinding signage and pavement painting between Lenora and Union streets for the north end construction zone.

## Public Engagement

- Continued development of monthly reports for the City Council.
- Distributed flyers, sent emails and made phone calls to stakeholders and community groups in advance of construction between Pine and Pike streets.
- Distributed flyers and coordinated messaging with Washington State Ferries in advance of access changes at Colman Dock.
- Provided four project briefings to the AWV Stakeholders Group, West Edge Neighborhood Association, Port of Seattle, AWV Parking Group, Salmon Homecoming Committee and the International Right of Way Association.

## Budget Snapshot

Overall budget

 **\$371.8M**

Expenditures to date

 **\$280M**

## Q1 2016 Budget

Planned Spending in Q1

 **\$21,760,000**

Actual Expenditures in Q1

 **\$20,540,000**

For the quarterly reports, we have adjusted our methodology for reporting Seawall Project expenditures to align them with Seawall Project monthly budget reporting. This provides a better quarterly reflection of contract expenditures within the period the expenditures were incurred, rather than when they were paid.

Environmental Performance Measures		
	Q1 2016	Project to date
Number of water quality exceedances*	0	4
Number of work days lost resulting from exceedances	0	0
Days of marine mammal monitoring	45	143
Days with work stoppage due to marine mammals	2	4**
* Exceedances are specific to the Section 401 Water Quality Certification. ** Partial days		

Social Equity Performance Measures (CWA)			
	Goal	Q1 2016	Project to date
Percent of work force from economically distressed zip codes	15%	16.7%	18.1%
Percent total project hours performed by Apprentices	15%	16.6%	15.3%
Percent total project hours performed by women	12%	13.2%	12.8%
Percent total project hours performed by people of color	21%	25.1%	25.3%

Safety Performance Measures	
	Project to date
Total work hours	976,656
Total recordable injuries	9
First aid cases	48
Total days away from work	0

# Waterfront Program progress in Q1

## MAIN CORRIDOR DESIGN

- Continued revising the 60% Main Corridor design, with anticipated completion in Q2 2016.
- Furthered progress on the design for the Marion Street Pedestrian Bridge, including:
  - Hosted two workshops with WSDOT and identified two viable structure types for the new bridge.
  - Partnered with the Washington State Ferries Colman Dock team for two meetings with the Seattle Design Commission on the Colman Dock and Marion Street Bridge design alternatives in mid-February.
- Released the Design-Build RFQ for the Washington Street Boat Landing Pergola Project on January 29. The most qualified teams will be invited to submit proposals (RFP) for the design, restoration and construction relocation of the pergola, to be placed back on the waterfront in the Pioneer Square Historic District. Design and construction is planned for Q4 2016 through Q3 2017.
- Completed the 30% design for the Lenora Street Bridge retrofit. Coordinated with WSDOT and the Port of Seattle regarding loading and maintenance needs for the new structure.
- Began negotiations for needed right-of-way acquisitions.
- Completed construction of the first stage of Puget Sound Energy's (PSE) 12" high-pressure gas main replacement. PSE is continuing with design and installation of the second phase of the 12" high-pressure gas main replacement. Construction will run concurrent with Waterfront Seattle construction.

- Coordinated the 60% design for network and transmission lines with Seattle City Light and the 60% design for the combined sewer overflow (CSO) system with Seattle Public Utilities.
- Gathered input from participating telecommunication companies on the 60% design for the telecommunications duct bank.

### Budget Snapshot

Overall budget **\$360M**

Expenditures to date **\$37.5M**

Overall budget numbers were amended during the 2016 budget process and therefore may differ from the overall budget totals shown in previous quarterly reports.

### Q1 2016 Budget

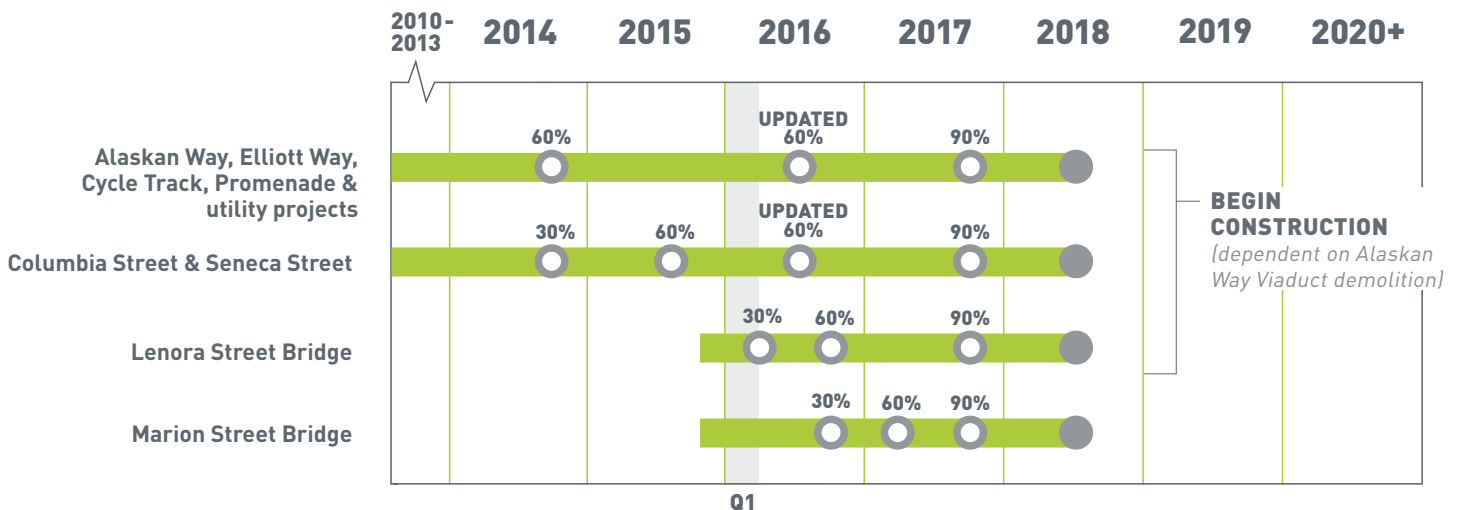
Planned Spending in Q1 **\$2,200,000**

Actual Expenditures in Q1 **\$1,333,267**

The quarterly spending and 'Expenditures to date' figures are based on total project spending, rather than the spending by Capital Improvement Program (CIP) project, and therefore may differ slightly from expenditure figures shown elsewhere.

## Schedule

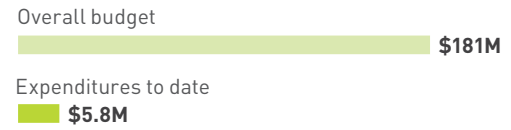
The 2016 Work Plan for the Office of the Waterfront identifies the Main Corridor as the primary focus for design and engineering in 2016. The 2016 Work Plan is available online, [waterfrontseattle.org/documents](http://waterfrontseattle.org/documents).



## OVERLOOK WALK AND EAST-WEST CONNECTIONS

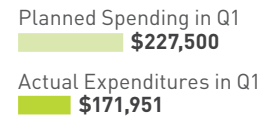
- Developed 30% design for the Overlook Walk.
- Coordinated with the Seattle Aquarium expansion team to further the concept design of the Overlook Walk to accommodate a potential Aquarium expansion.
- Continued conversations with the Human Services Department, Pike Place Market and ARTS to explore the concept of incorporating social services and “maker spaces” as a part of the Overlook Walk and MarketFront expansions.
- Issued a design RFQ in late February for the Pike and Pine Streetscape Improvements. The project will design streetscape improvements between First Avenue and Melrose Avenue on Pike and Pine streets. Work will be closely coordinated with the related Pike-Pine Multimodal Corridor Project that will be focused on improving transit and bicycle facilities in the corridor. The Downtown Seattle Association is a key partner in the project and will have a representative in the selection process.

## Budget Snapshot



Overall budget numbers were amended during the 2016 budget process and therefore may differ from the overall budget totals shown in previous quarterly reports.

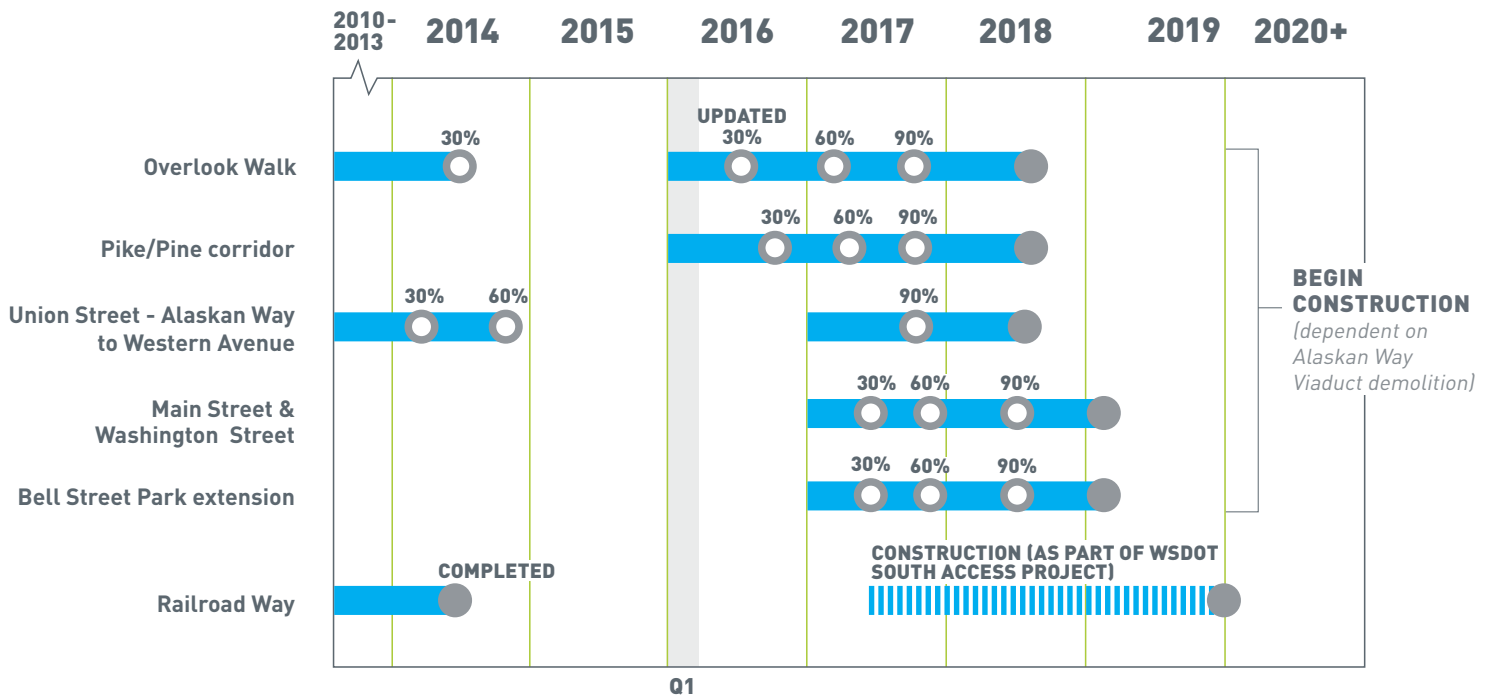
## Q1 2016 Budget



The quarterly spending and ‘Expenditures to date’ figures are based on total project spending, rather than the spending by Capital Improvement Program (CIP) project, and therefore may differ slightly from expenditure figures shown elsewhere.

## Schedule


The 2016 Work Plan for the Office of the Waterfront specifies the majority of the work on Overlook Walk and the East-West Connections to begin in 2016. The 2016 Work Plan is available online, [waterfrontseattle.org/documents](http://waterfrontseattle.org/documents).



## PUBLIC PIERS

- Advanced plans for a potential Pier 62/63 Phase 1 rebuild, in partnership with Parks and Friends of Waterfront Seattle, in order to align with the schedule for Seawall Replacement construction in the same area. The Phase 1 Rebuild would provide structural improvements to the southern half of the pier and preserve the northern half in place. Work would include new railings, lighting, utilities and a floating dock. Construction is anticipated to begin in Q4 2017.
- Submitted the 30% and 60% designs for the Pier 62/63 Phase 1 rebuild.
- Coordinated with Friends of Waterfront Seattle regarding potential funding assistance for the Phase 1 rebuild.
- Coordinated with Parks, including planning for engagement of the Park District Oversight Committee, regarding the Phase 1 rebuild.
- Inspected service and utility cabinets serving Pier 62/63 to confirm connection details and submitted Army Corps and Shoreline permits.


## Budget Snapshot

Overall budget  
 **\$90.5M**

Expenditures to date  
 **\$2.3M**

Overall budget numbers were amended during the 2016 budget process and therefore may differ from the overall budget totals shown in previous quarterly reports.

### Q1 2016 Budget

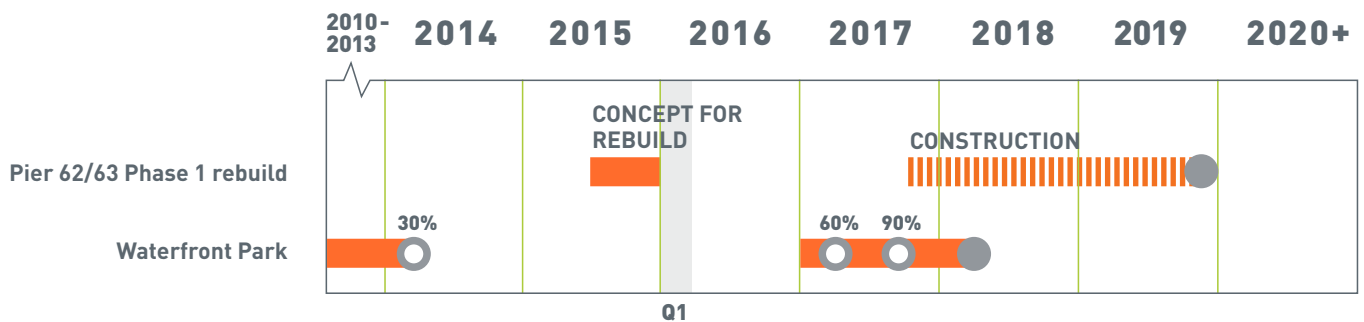
Planned Spending in Q1  
 **\$275,000**

Actual Expenditures in Q1  
 **\$266,227**

The quarterly spending and 'Expenditures to date' figures are based on total project spending, rather than the spending by Capital Improvement Program (CIP) project, and therefore may differ slightly from expenditure figures shown elsewhere.

## Schedule

The 2016 Work Plan for the Office of the Waterfront specifies additional design work on Pier 62/63 in 2016 to make the site eligible for potential early construction opportunities. The 2016 Work Plan is available online, [waterfrontseattle.org/documents](http://waterfrontseattle.org/documents).



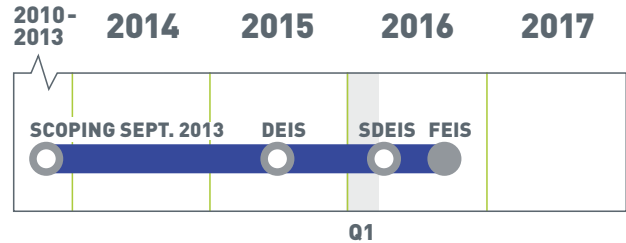
# Programmatic activities in Q1

## ENVIRONMENTAL REVIEW

- Drafted the Supplemental Draft Environmental Impact Statement (EIS) for the Alaskan Way, Promenade, and Overlook Walk. The Supplemental Draft EIS will be released in Q2 2016 and will evaluate new alternatives for the Overlook Walk and Alaskan Way. It will be accompanied by a 30-day public comment period, including a public meeting and opportunities to comment online.

## Schedule

The 2016 Work Plan for the Office of the Waterfront identifies development of the Final Environmental Impact Statement as a core activity for 2016. The 2016 Work Plan is available online, [waterfrontseattle.org/documents](http://waterfrontseattle.org/documents).



## CITY/WSDOT FUNDING AGREEMENT

- Reviewed all identified risks to constructing the project on schedule and on budget, and developed a comprehensive risk register to establish cost and associated risks to construction.

## CONSTRUCTION EXPERIENCE/PUBLIC SPACE ACTIVATION

- Developed a summer activation plan with ARTS, Friends of Waterfront Seattle, Downtown Seattle Association’s Metropolitan Improvement District, SDOT and Parks to operate and maintain programming in the waterfront area, including vending, plantings, furnishings, and a series of art installations. The plan is scheduled to begin in Q2 2016.
- Confirmed plans to install mock-ups of the new Promenade paving in order to test the materials and installation to inform the final design and ultimate construction of the Promenade. The test mock-ups are planned to be installed in Q2 2016.

## PUBLIC ENGAGEMENT

- Participated in the Mayor’s Office “Seattle at Work” event at City Hall on January 26.
- Held a design team meeting with a small group of representatives from the blind community, including The Lighthouse for the Blind, Inc. and the Chair of the Seattle Commission for People with disAbilities on January 29 to solicit feedback on options for intersection curb ramps.
- Partnered with the Seawall Replacement outreach team to provide information on current construction and future Waterfront Seattle plans at the February 3 Seattle Metropolitan Chamber of Commerce’s Restaurant After Hours event at the Seattle Aquarium.

- Briefed the Alaskan Way Viaduct Stakeholders Group on January 12 on accomplishments in 2015, plans for 2016 and the Supplemental Draft EIS.
- Presented a project update to the Alaskan Way Viaduct Parking Mitigation Stakeholder Group on February 10.
- Presented on overall Waterfront Seattle goals, design and status to numerous community and professional groups, including:
  - February 4: Milepost 31 First Thursday Speaker Series
  - February 26: University of Washington Department of Planning Professional Council
  - March 1: Risk Management Association
  - March 4: American Institute of Architects
  - March 8: Seattle Korean American Chamber of Commerce
  - March 9: Congress of New Urbanism
  - March 9: Belltown Community Council
  - March 25: Committee of 33
- Met with multiple project area property owner groups to discuss questions of access specific to their properties. Meetings included:
  - January 8: Waterfront Landings Condominium Homeowners’ Board
  - February 9: Fix/Madore Condominiums
  - March 16: Hillclimb Court Residents’ Council

## **PUBLIC ART**

- Worked with waterfront artist Oscar Tuazon to obtain initial project approval from the City Public Art Advisory Committee (PAAC) on March 22.
- Held a work session on March 3 with Ann Hamilton, the artist commissioned to create a permanent piece for Pier 62/63.
- Continued planning for temporary arts pieces as a part of the summer waterfront activation.

## Coordination with partners in Q1

---

### **FRIENDS OF WATERFRONT SEATTLE**

- Worked with Friends of Waterfront Seattle to finalize a memorandum of understanding to formalize their commitment of funding for a portion of the cost of the Pier 62/63 Phase 1 rebuild.
- Partnered with Friends of Waterfront Seattle to brief more than 10 individual organizations and donors through meetings and events.
- Continued to fund operation of the Waterfront Space showroom on Western Avenue.

### **PIKE PLACE MARKET'S MARKETFRONT**

- Pike Place Market completed installation of the cap on top of the BNSF railway tunnel in February, a critical path item to advance construction of the MarketFront expansion and the highest risk item in the project's construction.

### **SEATTLE AQUARIUM MASTER PLAN**

- Continued working with the Aquarium leadership to draft a Memorandum of Agreement for a potential Aquarium expansion, which would finalize the location, schedule and funding.
- Partnered with the Aquarium for a March 18 tour for representatives from the design and partnerships team to better understand the "back of house" operations and the limitations of the current Aquarium campus.

### **WASHINGTON STATE FERRIES**

- Worked with the Washington State Ferries Colman Dock team to review proposed structures for the new Marion Street Pedestrian Bridge in alignment with WSDOT's plans to renovate Colman Dock.
- Began planning for joint public outreach events with the Washington State Ferries team regarding the proposed designs for Marion Street Bridge and Colman Dock, anticipated to be held in Q2 2016.